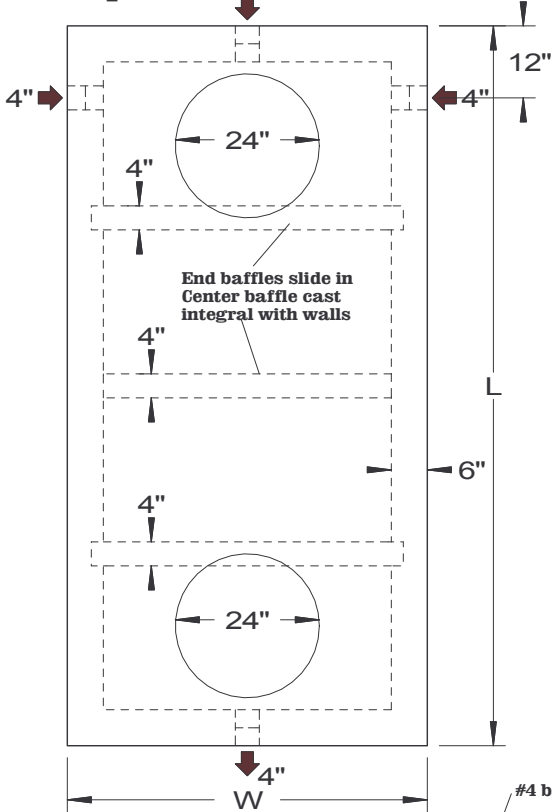


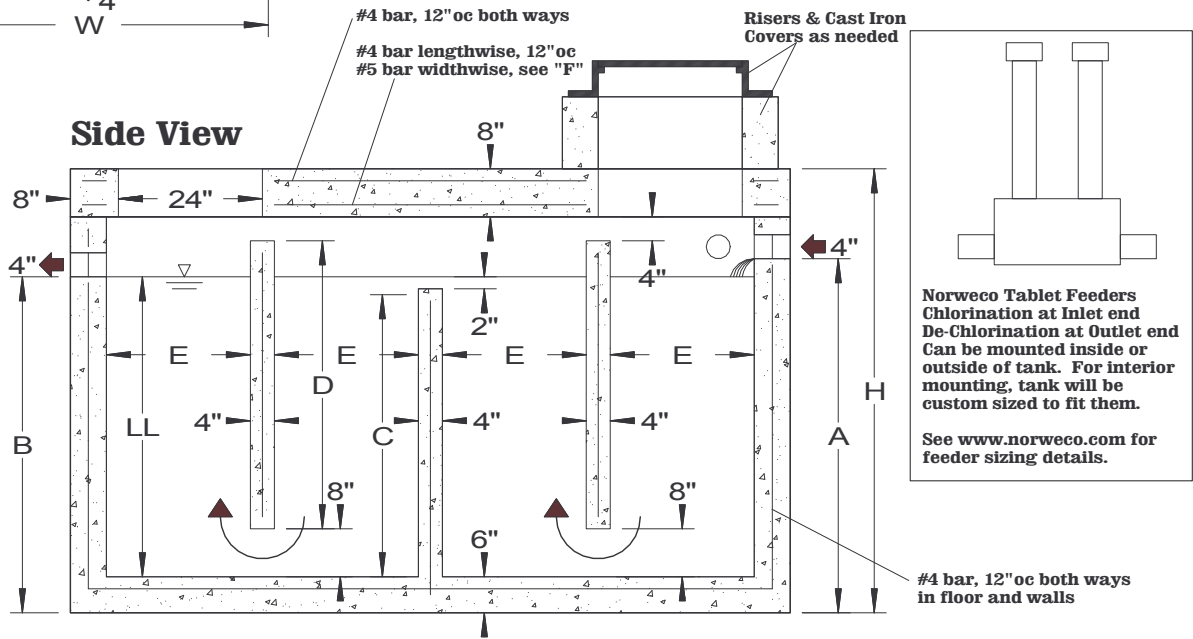
Top View 4"



Model	CC-500	CC-1000	CC-1500	CC-2000
Gallons	500	1,000	1,500	2,000
L	10'	10'	11'	11'
W	4'	5'	6'	7'
H	62"	74"	80"	86"
LL	34"	50"	54"	60"
A	43"	59"	63"	69"
B	40"	56"	60"	66"
C	32"	48"	52"	58"
D	36"	48"	54"	60"
E	24"	24"	30"	30"
F	8"	6"	5"	4"
Tank wt	11,700 lb	16,000 lb	20,700 lb	20,500 lb
Roof wt	3,500 lb	4,300 lb	5,900 lb	7,000 lb
Total wt	15,200 lb	20,300 lb	26,600 lb	27,500 lb

*Use light weight concrete in floor & walls.

Side View



SPECIFICATIONS		CHLORINE CONTACT TANKS Traffic Bearing Design	
Concrete Min. Strength: 4,000 psi at 28 days Reinforcement: #4 & 5 bar / ASTM A615 Air Entrainment: 6% Construction Joint: Butyl Rubber Sealant Pipe Connection: Polylok Seal (patented) Load Rating: HS20-44 / ASTM C857		Woodard's Concrete Products, Inc. 629 Lybolt Road, Bullville, NY 10915 (845) 361-3471 / Fax 361-1050	
		Page 14A 5/18/12	