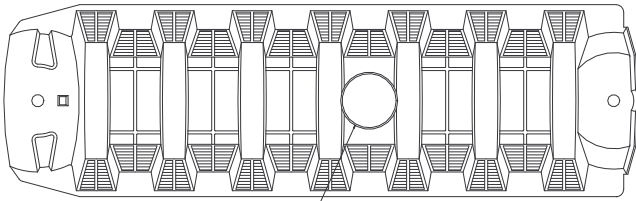
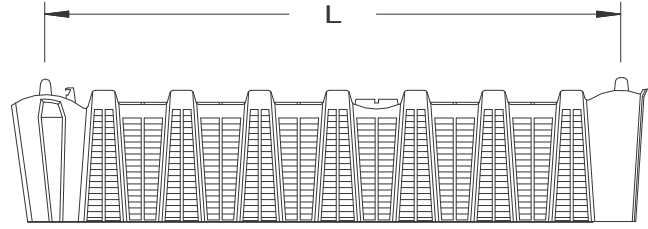


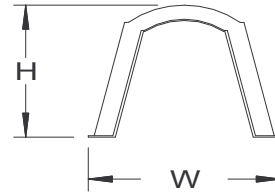
Top View



Inspection Port

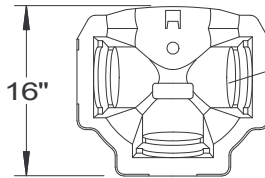
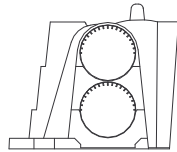
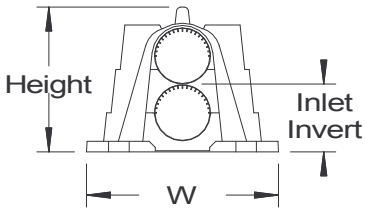


Side View

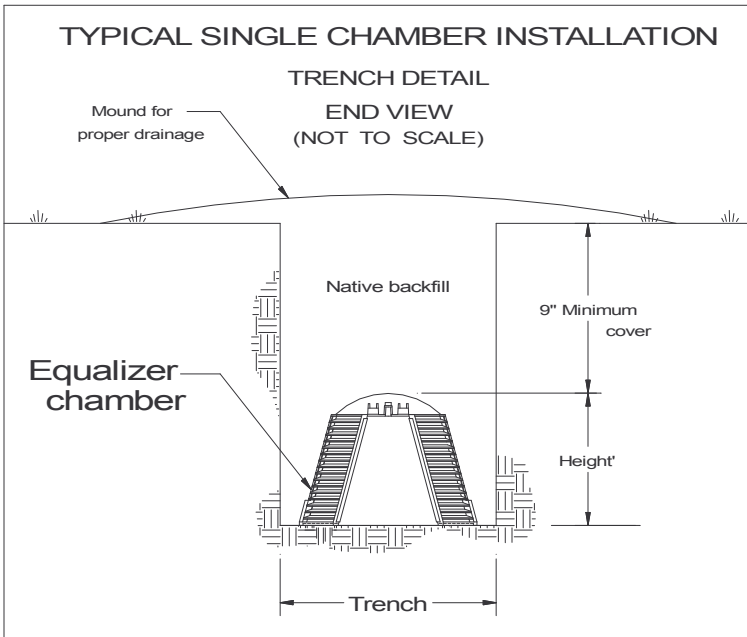


End View

Multi-port End Cap



Inlets can take 3" or 4" schedule 35 pipe or 4" schedule 40 pipe.



| Type | Equalizer-24 | Equalizer-36 | High Capacity |
|-----------------|---------------|---------------|---------------|
| Inventory # | INF-Quick4-24 | INF-Quick4-36 | INF-HC |
| Length | 48" | 48" | 75" |
| Width | 16" | 22" | 34" |
| Height | 12" | 12" | 16" |
| Capacity | 18 gal | 32 gal | 122 gal |
| Weight | 10 lb | 13 lb | 20 lb |
| 4" Inlet Invert | 6" | 6" | 11" |
| Trench | 24" | 24" | 36" |

SPECIFICATIONS

Construction: Polyethylene plastic
 Equalizer 24 chambers are a direct replacement for standard 2' wide pipe and stone trench.
 NYS Certified; check with inspector for local acceptance.
 Load Rating: 16,000 lb axle w/12" cover

**POLYETHYLENE LEACHING CHAMBERS
 INFILTRATOR QUICK4 MODELS**

Woodard's Concrete Products, Inc.
 629 Lybolt Road, Bullville, NY 10915
 (845) 361-3471 / Fax 361-1050