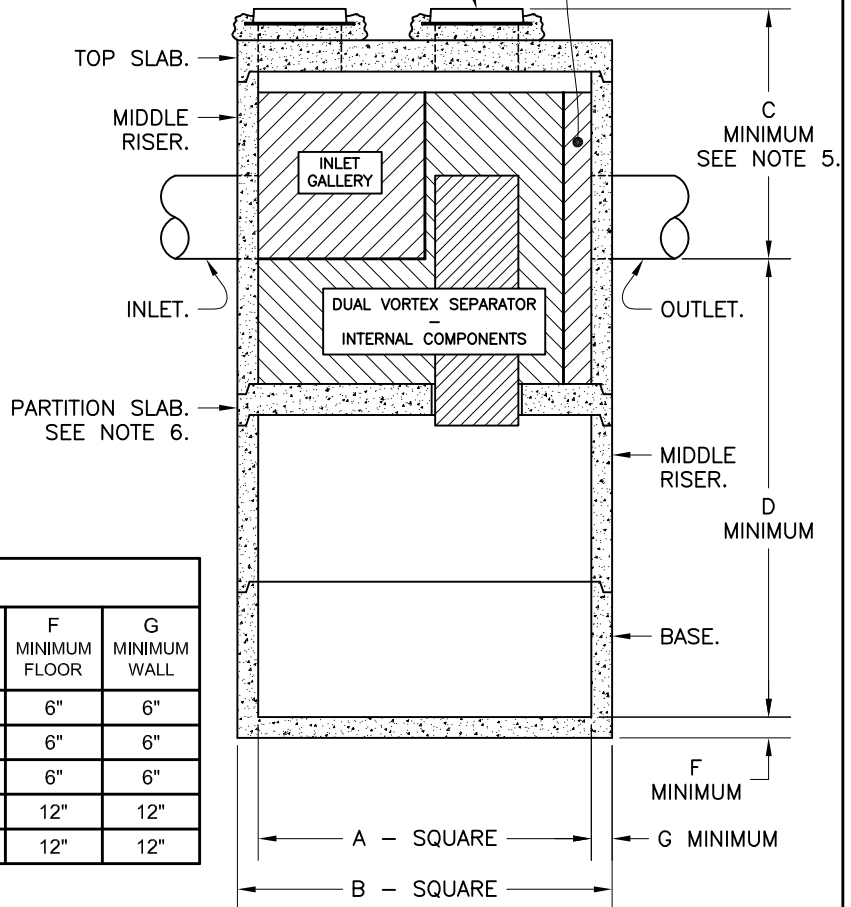
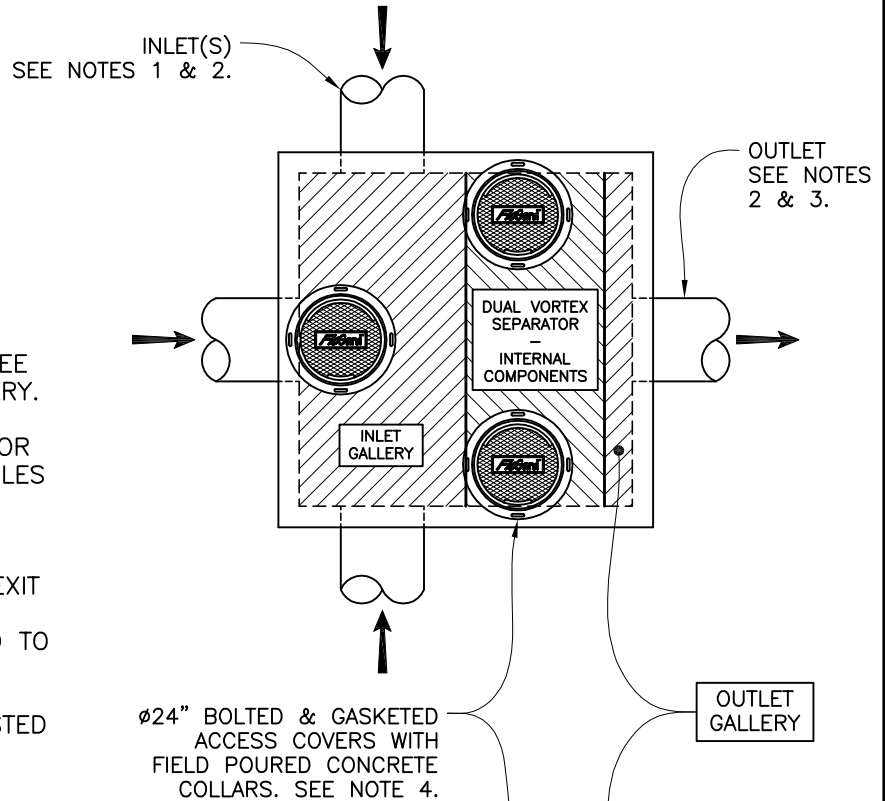


NOTES:

1. INLET PIPES MAY ENTER SEPARATOR ON THREE SIDES. POSITION RESTRICTED TO INLET GALLERY.
2. INLET AND OUTLET PIPES MAY JOIN SEPARATOR AT OBLIQUE ANGLES. SPECIFIC MAXIMUM ANGLES & PIPE SIZES APPLY. CONTACT KRISTAR ENTERPRISES FOR ENGINEERING DETAILS.
3. STANDARD OUTLET PIPE CONFIGURATION TO EXIT SEPARATOR AT THE CENTER LINE. CUSTOM ANGLED OUTLET CONFIGURATIONS RESTRICTED TO FACE OF UNIT OPPOSITE INLET GALLERY.
4. BOLTED & GASKETED ACCESS COVERS ADJUSTED TO GRADE, USING GRADE RINGS FIELD POUR CONCRETE COLLARS AS REQUIRED.
5. FOR DEPTHS LESS THAN THE MINIMUM SHOWN AS DIMENSION C IN THE TABULATION CONTACT KRISTAR ENTERPRISES FOR ENGINEERING DESIGN ASSISTANCE.
6. PARTITION SLAB MAY BE MADE AS A CONCRETE SLAB AS SHOWN, OR FROM ALTERNATIVE MATERIALS: e.g. FIBERGLASS COMPOSITE, STAINLESS STEEL, ETC.
7. CONCRETE COMPONENTS SHALL BE MANUFACTURED IN ACCORDANCE WITH ASTM DESIGNATION C858.
8. REMOVABLE INTERNAL COMPONENTS MAY BE AVAILABLE TO FACILITATE MAINTENANCE. SEE DRAWING DVS-R-0001 OR CONTACT KRISTAR ENTERPRISES FOR DETAILS.



TABULATION

MODEL	A ID (SQUARE)	B OD (SQUARE)	C MINIMUM SEE NOTE 5	D MINIMUM SUMP	E MAXIMUM Ø PIPE	F MINIMUM FLOOR	G MINIMUM WALL
DVS-72S	6' [72"]	7' [84"]	4.5' [54"]	8.25' [99"]	36"	6"	6"
DVS-84S	7' [84"]	8' [96"]	5.0' [60"]	9.50' [114"]	42"	6"	6"
DVS-96S	8' [96"]	9' [108"]	5.5' [66"]	10.75' [129"]	48"	6"	6"
DVS-120S	10' [120"]	12' [144"]	7.0' [84"]	13.50' [162"]	48"	12"	12"
DVS-144S	12' [144"]	14' [168"]	8.0' [96"]	16.00' [192"]	60"	12"	12"

* FOR SMALLER SYSTEMS (DVS-36S, DVS-48S & DVS-60S)
SEE DRAWING DVS-S-0001.

TITLE

FloGard DUAL-VORTEX
HYDRODYNAMIC SEPARATOR
SQUARE STRUCTURES

DVS-72S, DVS-84S, DVS-96S, DVS-120S, DVS-144S



KriStar Enterprises, Inc.

360 Sutton Place, Santa Rosa, CA 95407
Ph: 800.579.8819, Fax: 707.524.8186, www.kristar.com

DRAWING NO. DVS-S-0002	REV D	ECO 0074 JPR 9/16/09	DATE JPR 12/20/07	SHEET 1 OF 1
---------------------------	----------	-------------------------	----------------------	--------------