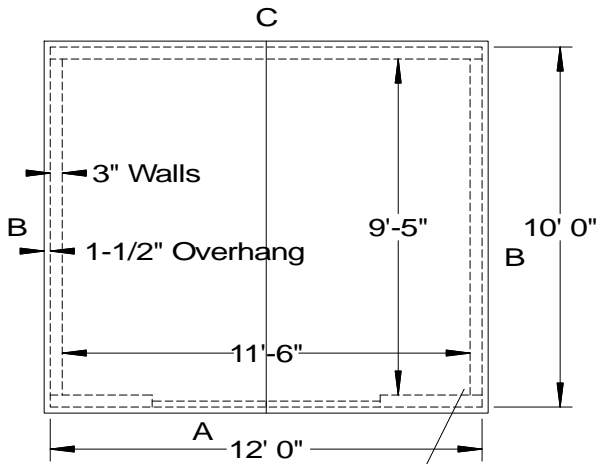
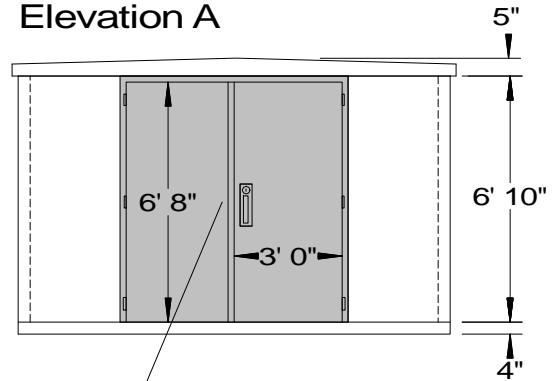


Plan View



Connections: 1/4" steel corner brackets w/ 1/2" coil bolts

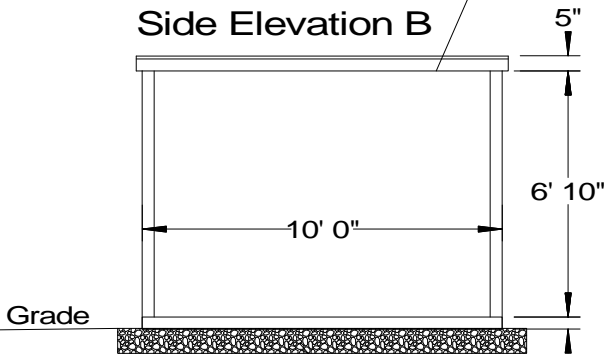
Elevation A



Door: Ceco double 3'x6'-8"x1-3/4" steel, grey primed steel, tamper-proof hinges, deadbolt lock w/ interior turn button, stainless steel handle & backing plate

Caulk: all joints caulked with Sikaflex 1a polyurethane sealant

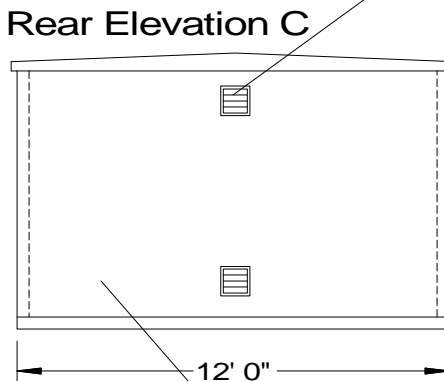
Side Elevation B



Min. 4" of crushed stone or sand at least 12" wider than building

(2) 8"x8" Aluminum Screened Vents can be relocated as needed

Rear Elevation C



Finish: Vertical broom-finish walls standard, exposed aggregate finish optional

SPECIFICATIONS

Concrete Min. Strength: 4,000 psi at 28 days
 Reinforcement: #3 & #4 Rebar, Fiber
 Air Entrainment: 5%
 Total Weight = 22,000 lbs
 Roof Live Load = 60 psf
 Wind Load = 27 psf (130 mph)

**PRECAST UTILITY BUILDING
 STANDARD 10'x12' DESIGN**

Woodard's Concrete Products, Inc.
 629 Lybolt Road, Bullville, NY 10915
 (845) 361-3471 / Fax 361-1050