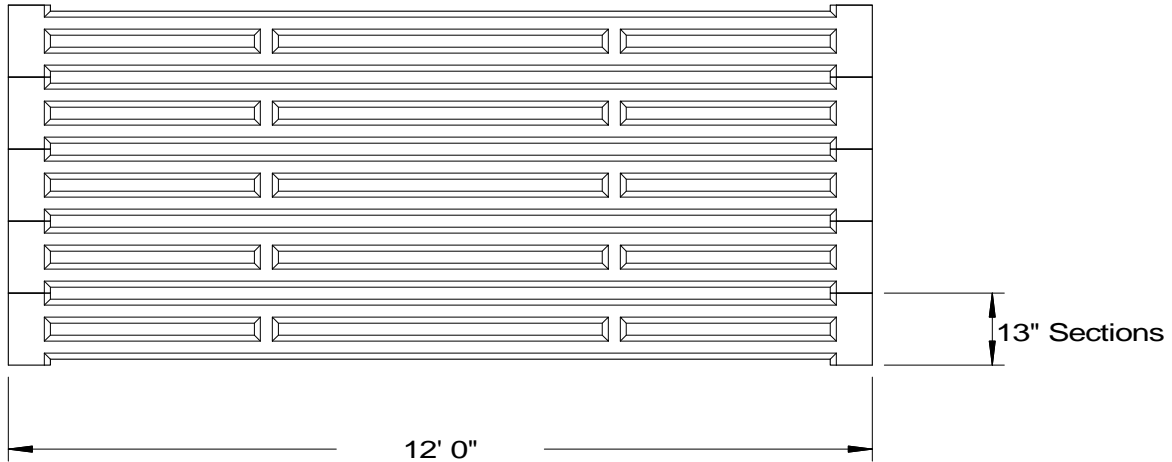
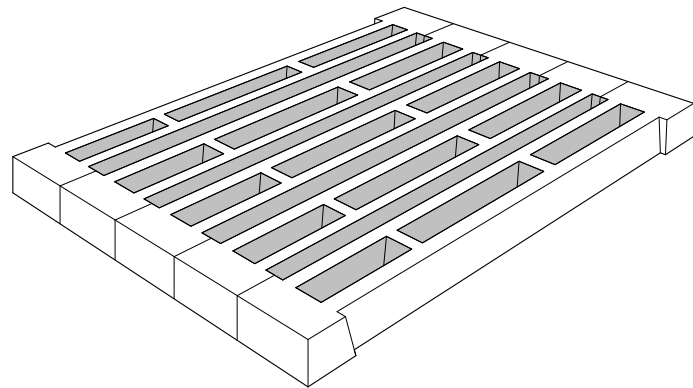
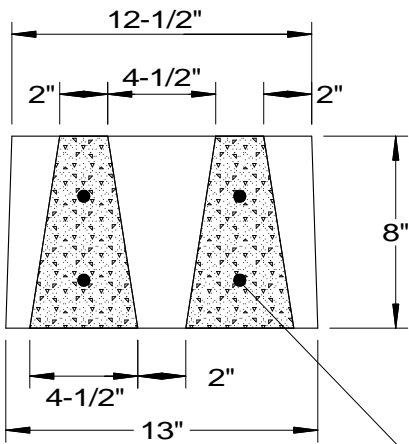


Plan View



*Traffic bearing capacity is based on a fully supporting bed of stone or cross supports with a maximum 14" spacing.

Section View
Through Center



(2) 1/2" Rebar on each side

SPECIFICATIONS	
<p>Concrete Min. Strength: 4,000 psi at 28 days Reinforcement: #4 Rebar / ASTM A615 Air Entrainment: 5% Load Rating: H20* Weight = 675 lbs</p>	<p>PRECAST DEER / CATTLE GUARD 12' WIDE SECTION</p> <p>Woodard's Concrete Products, Inc. 629 Lybolt Road, Bullville, NY 10915 (845) 361-3471 / Fax 361-1050</p>
<p>Page 2F 5/9/02</p>	