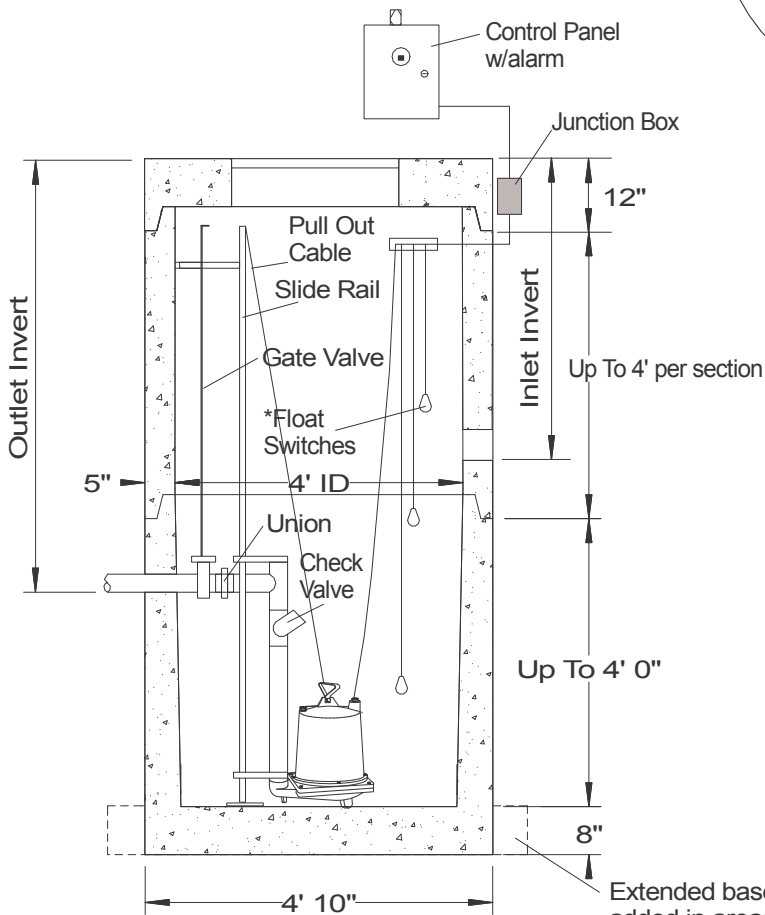


### Typical Section View Commercial Pump Chamber



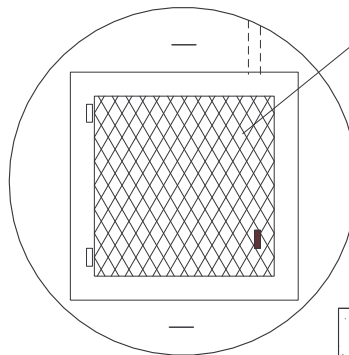
4' ID chamber shown  
5' & 6' ID also available

All chambers are custom made as needed.

\*7" minimum elevation change between on and off floats recommended

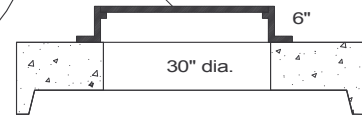
for proper operation; use a pressure bell system for smaller doses (CSI Controls RK series).

### Plan View

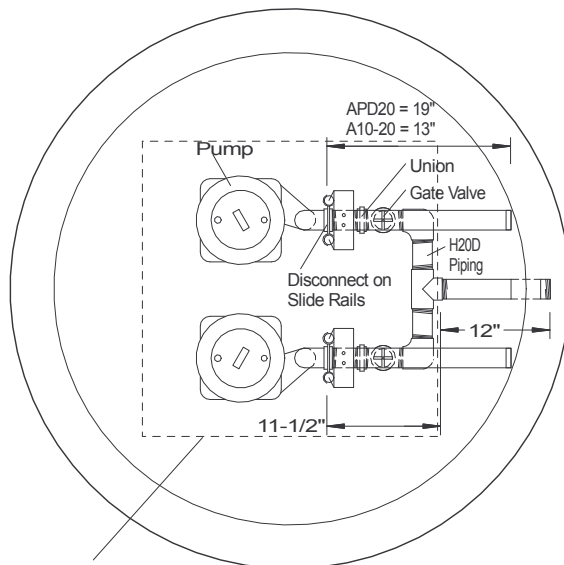


Aluminum Hatch Door  
24"x24" or 30"x30" for  
a 4' ID chamber, door is  
watertight w/drain and has  
a padlock hasp,  
300 psf or H2O load rating

Roof Option:  
Use cast iron 6" frame and  
32" bolt down cover,  
H2O load rating



### Plan View of Duplex Pump Installation in a 4' ID Chamber



30"x30" Aluminum  
Hatch door opening  
(min. required for dual pumps with slide rails)

Extended bases can be  
added in areas where high  
ground water may cause  
flotation.

### SPECIFICATIONS

Concrete Min. Strength: 4,000 psi at 28 days

Reinforcement: Wire & Rebar / ASTM C478

Air Entrainment: 6%

Pipe Connection: Rubber Pipe Boots

Volume: 4' = 94 gal/vf, 5' = 147 gal/vf,

6' = 212 gal/vf

Load Rating: 300 psf or HS20-44

### PRECAST PUMP CHAMBERS COMMERCIAL GRADE

**Woodard's Concrete Products, Inc.**

629 Lybolt Road, Bullville, NY 10915  
(845) 361-3471 / Fax 361-1050

Page 6C 12/12/12