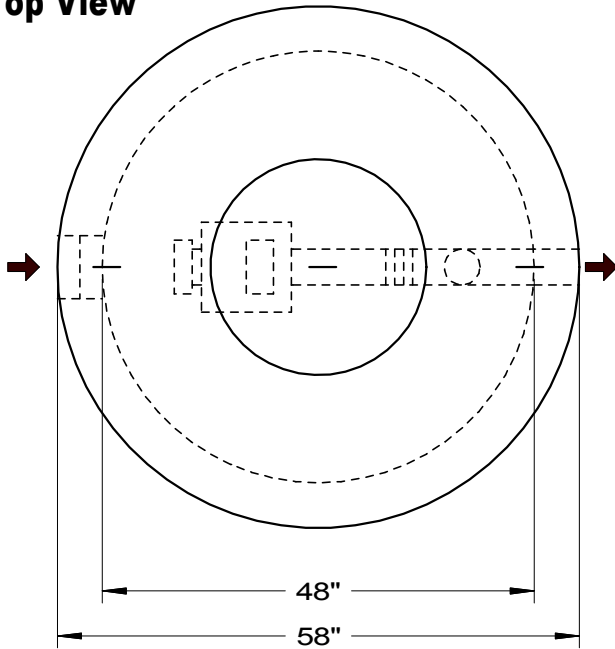


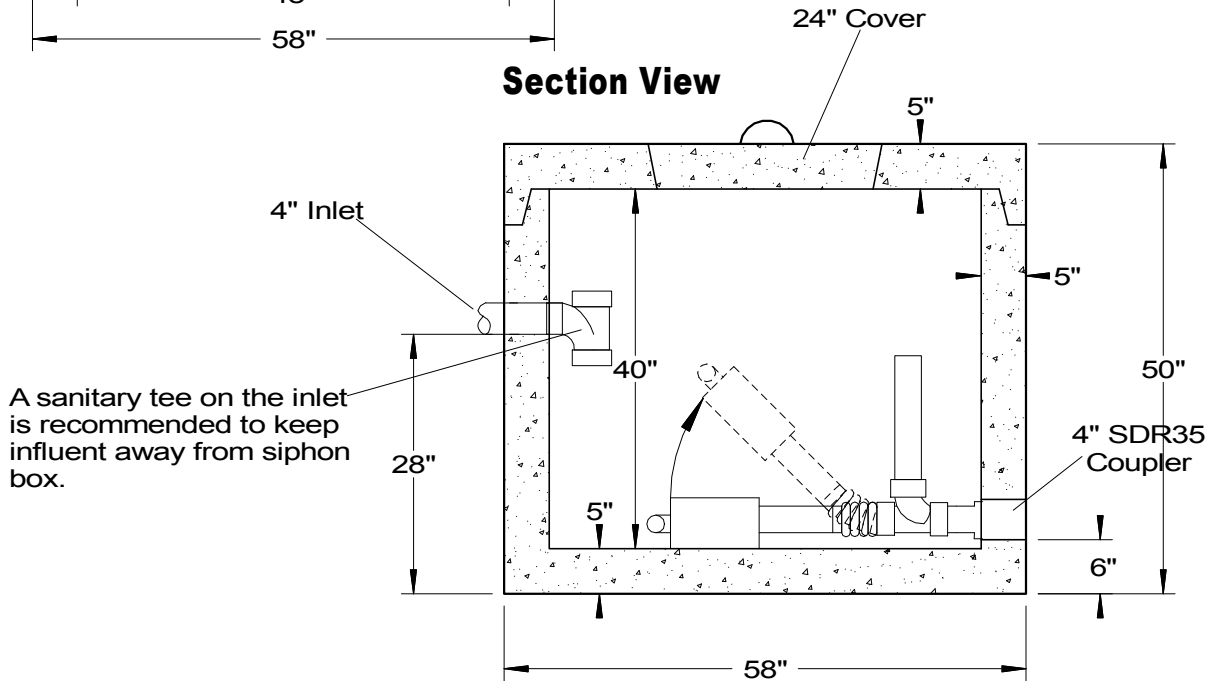
Top View



Model #	313	317
Pipe Size (inches)	3	3
Single Siphon		
Draw (in.)	13*	17*
Dose (gallons)	102	133
Rate (gal/min)	72	72
Invert in to	22"	22"
Invert out	22"	22"

*17" draw is the maximum for this chamber. Any dose between 63 and 133 gallons is possible by adjusting the siphon. Just give us your gallon requirement and we will adjust the draw.

Section View



SPECIFICATIONS

Concrete Min. Strength: 4,000 psi at 28 days
 Reinforcement: #4 Rebar, 6x6x10ga. WWM
 Air Entrainment: 6%
 Construction Joint: Butyl Rubber Sealant
 Pipe Connection: Rubber boot & SDR-35 Coupler
 Weight = 4,500 lbs
 Load Rating: 300 psf

PRECAST SIPHON CHAMBER SMALL DOSAGE SC-4X3

Woodard's Concrete Products, Inc.

629 Lybolt Road, Bullville, NY 10915
 (845) 361-3471 / Fax 361-1050

Page 1C 11/19/2018