

"Flout" Siphons

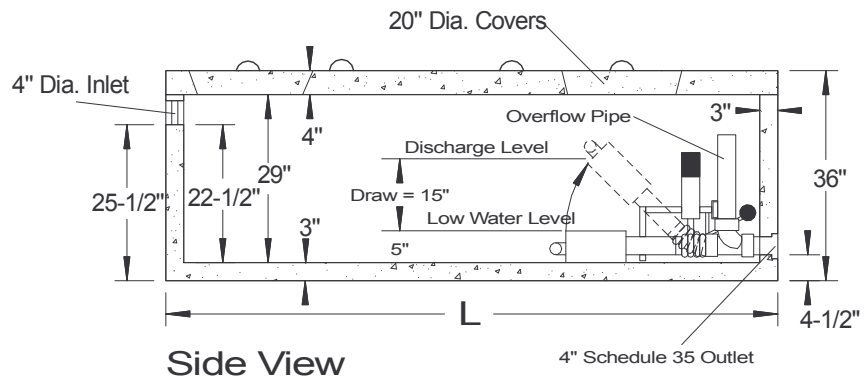
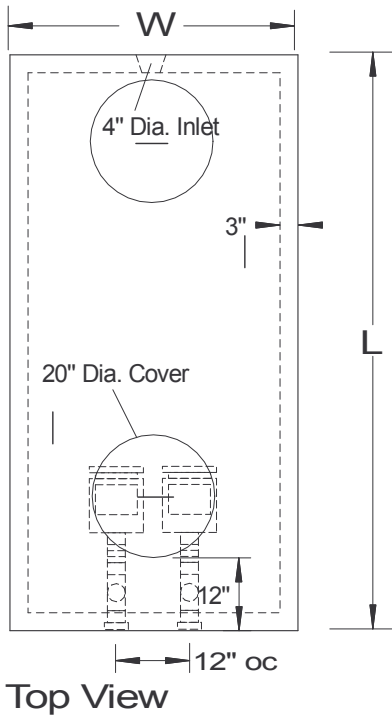
Made in the USA by:



Tanks with 15" draw Siphons

Gallons of Dose	Tank Size (WxL)
240	4'x8'
323	4'-10"x8'-6"
472	5'-8"x10'-6"
646	6'-6"x12'

Discharge rate = 72 gpm



Notes:

1. These chambers are not stock; please allow two weeks notice for delivery.
2. Other dose volumes available on a special order basis.
3. Volume can be reduced with solid blocks on the inlet end.

SPECIFICATIONS

Concrete Min. Strength: 4,000 psi at 28 days
 Reinforcement: #3 Rebar, 10ga. Wire Mesh
 Air Entrainment: 6%
 Construction Joint: Butyl Rubber Sealant
 Pipe Connection: Polylok Seal / SDR 35 Coupler
 Weight varies
 Load Rating: 300 psf

PRECAST SIPHON CHAMBER DUAL ALTERNATING DESIGN

Woodard's Concrete Products, Inc.

629 Lybolt Road, Bullville, NY 10915
 (845) 361-3471 / Fax 361-1050

Page 3C 5/18/12