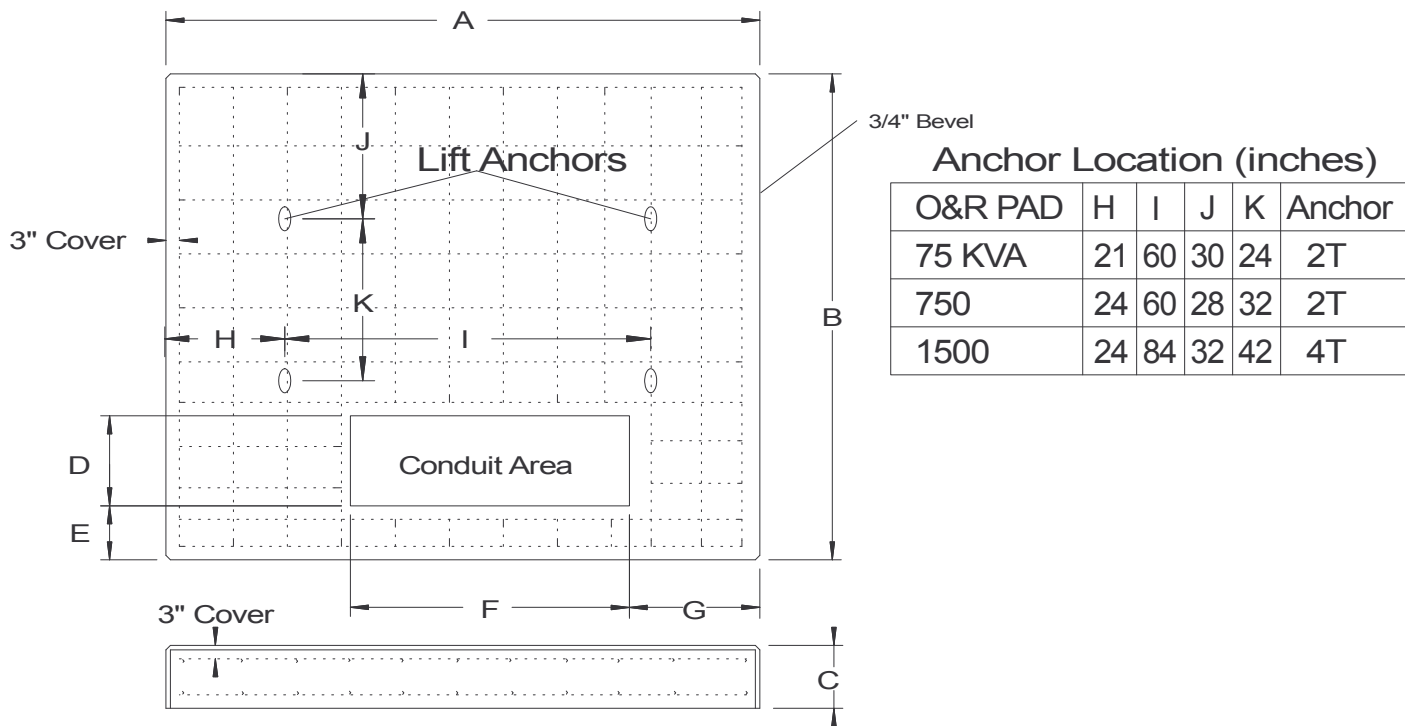


Co.	Trans. Size	A	B	C	D	E	F	G	Weight(lbs)
R & O	75-500 kva	8'-6"	7'-3"	1'-0"	1'-1"	1'-4"	3'-6"	2'-0"	8,400
	750-1000	9'-0"	7'-8"	1'-0"	1'-6"	10"	3'-6"	2'-6"	9,200
	1500-2500	11'-0"	9'-2"	1'-6"	1'-6"	10"	3'-6"	3'-6"	20,700
CON ED	1000-2000	7'-0"	7'-0"	7.5"	1'-7"	6"	4'-10"	1'-1"	3,700
N. MOHAWK	75-500	6'-0"	6'-0"	6"	1'-3"	8"	3'-0"	1'-6"	2,400
	500-1000	7'-0"	7'-0"	6"	1'-3"	8"	3'-6"	1'-6"	3,200
	1000-2500	8'-0"	8'-0"	6"	1'-6"	8"	4'-0"	1'-6"	4,200
NYSEG	75-150	6'-6"	6'-0"	6"	1'-3"	10"	4'-0"	13"	2,200
	300-1500	7'-5"	6'-3"	6"	1'-5"	14"	4'-2"	18"	2,900
	2500	8'-0"	8'-0"	6"	2'-0"	1'-0"	5'-0"	1'-0"	3,900



SPECIFICATIONS	
Concrete Min. Strength: 4,000 psi at 28 days Reinforcement: #4 Rebar, 12" o.c., 2 layers Air Entrainment: 5%	<p>PRECAST TRANSFORMER PADS 75 - 2500 KVA</p> <p>Woodard's Concrete Products, Inc. 629 Lybolt Road, Bullville, NY 10915 (845) 361-3471 / Fax 361-1050</p> <p>Page 15F 10/31/02</p>