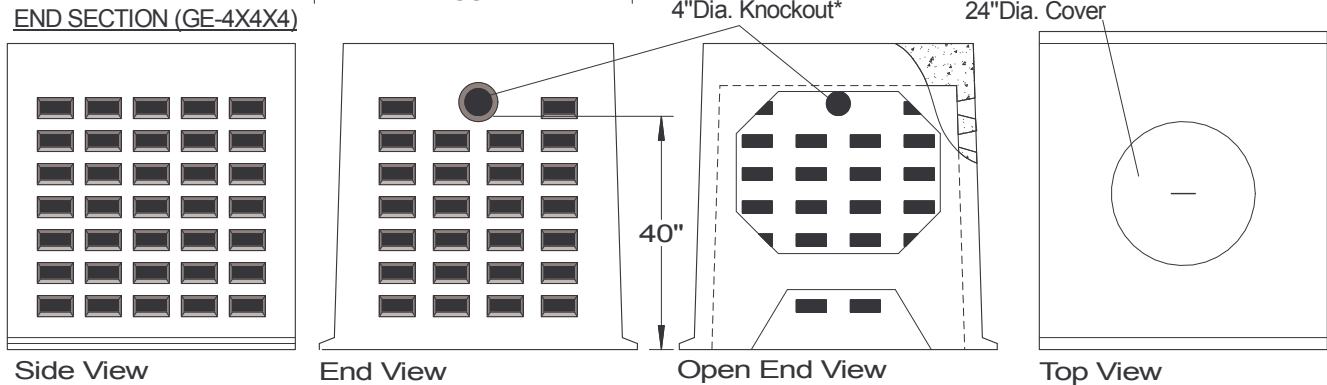


\*Pipe openings can be sized as needed.



<b>SPECIFICATIONS</b>	
<p>Concrete Min. Strength: 4,000 psi at 28 days            Reinforcement: #3 &amp; #4 Rebar / ASTM A615            Air Entrainment: 6%            Capacity = 350 gallons to outlet / 4' section            Sidewall Area: End=48 sq ft; Middle=32 sq ft            Weights: End = 2,200 lbs; Middle = 1,800 lbs            Load Rating: HS20-44 / ASTM C857</p>	<p><b>PRECAST GALLEYS</b>  <b>MODELS GE-4X4X4, GM-4X4X4</b></p> <p><b>Woodard's Concrete Products, Inc.</b>            629 Lybolt Road, Bullville, NY 10915            (845) 361-3471 / Fax 361-1050</p>
<p>Page 9D 11/12/12</p>	