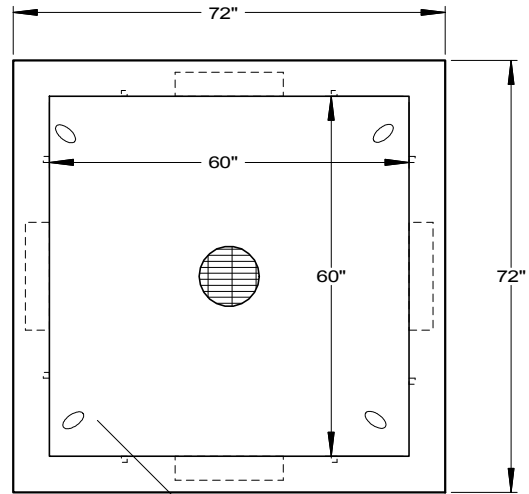


Top View

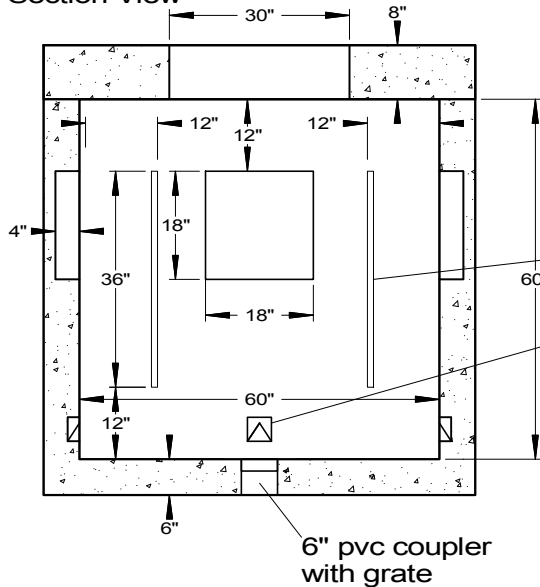


(4) black lift cables in floor

Rebar:
Walls & Floor
#4 @ 12" oc both ways

Roof, (3)#5 bar on each side of opening in bottom layer + (4)#5 at 45 degrees around opening
Top layer, (3)#4 on each side of opening

Section View

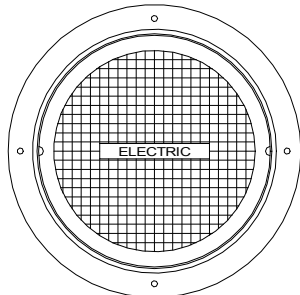


Insert Strips

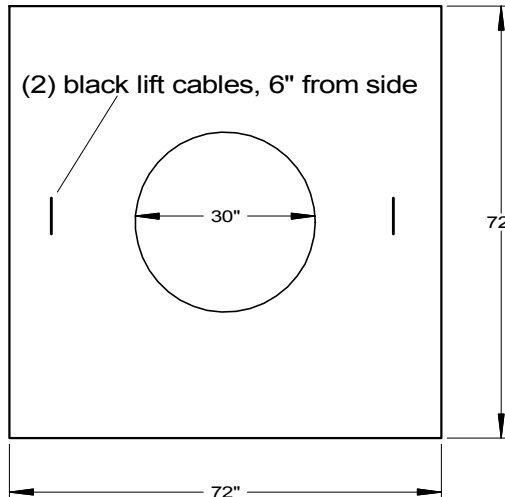
Pull Eyes

6" pvc coupler with grate

Cover - 8" thick



Campbell #1012A bolted & gasketed cover



(2) black lift cables, 6" from side

Concrete:
Floor = 0.7 yard
Walls = 2 yards
Wt = 11,000 lb
Roof = 0.8 yard
wt = 3,500 lb

SPECIFICATIONS

Concrete Min. Strength: 4,000 psi at 28 days
Reinforcement: #4 & #5 Rebar / ASTM A615
Air Entrainment: 6%
Pipe Connection: Knockout Panels
Load Rating: HS20-44
Total Weight = 14,500 lbs
Pulling Irons: PA Inserts model PI-2

PRECAST 5'x5'x5' ID PULLBOX

Woodard's Concrete Products, Inc.

629 Lybolt Road, Bullville, NY 10915
(845) 361-3471 / Fax 361-1050

2/9/15