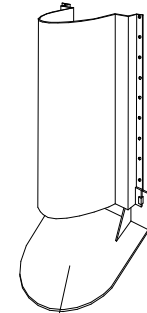
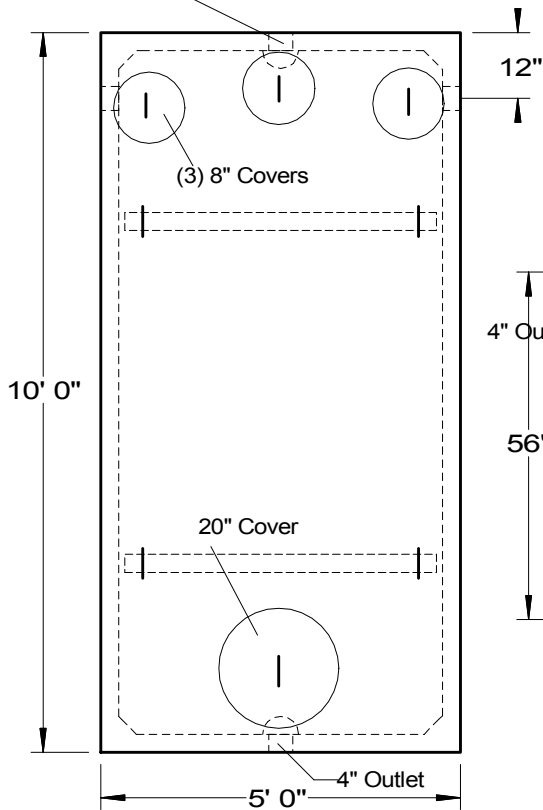


Baffle (deflector on outlet only)

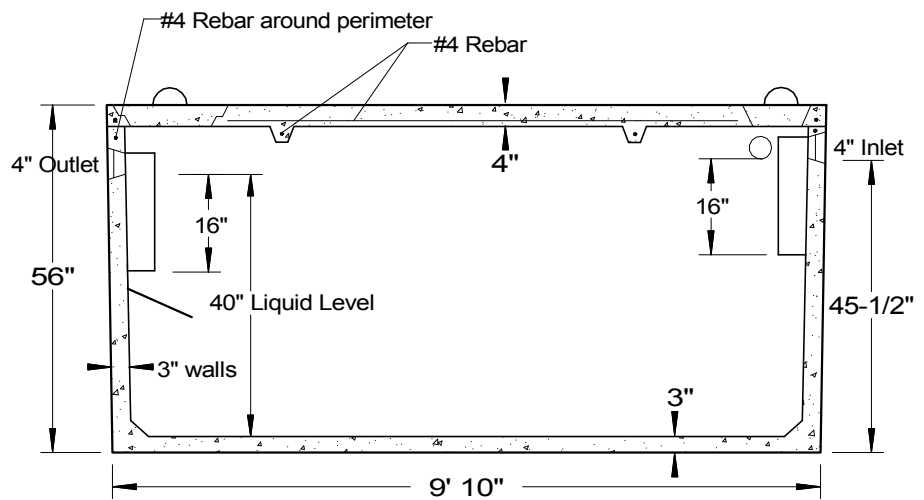


Gas Deflector

(3) 4" Polylok Inlets
Baffle can be moved to side



Top View



Side View

SPECIFICATIONS

Concrete Min. Strength: 4,000 psi at 28 days
 Reinforcement: #4 bar gr. 60, Forta Ferro 5 lb/cy
 Air Entrainment: 6%
 Construction Joint: Butyl Rubber Sealant
 Pipe Connection: Polylok Seal (patented)
 Weight = 8,700 lbs
 Load Rating: 300 psf

LOW PROFILE SEPTIC TANKS MODEL LB-1000 / 1000 GALLONS

Woodard's Concrete Products, Inc.
 629 Lybolt Road, Bullville, NY 10915
 (845) 361-3471 / Fax 361-1050