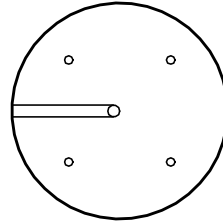


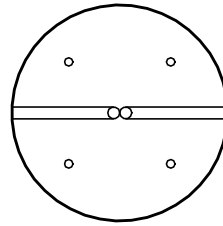
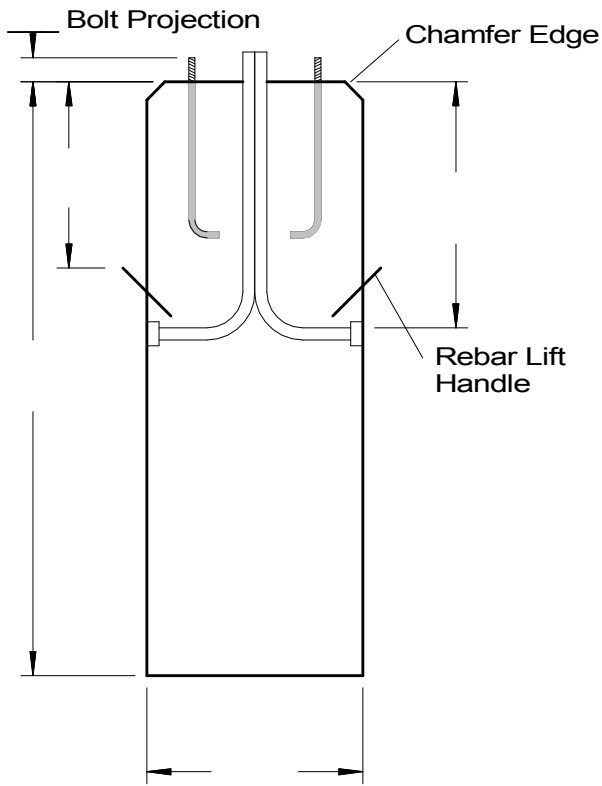
Pole Base Worksheet

Top Views

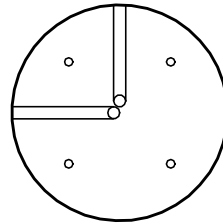


Quantity =

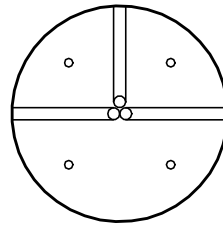
Side View



Quantity =



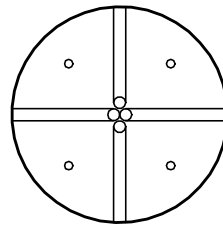
Quantity =



Quantity =

Bolt Pattern Diameter = _____

Bolt size = _____



Quantity =

SPECIFICATIONS	
Concrete Min. Strength: 4,000 psi at 28 days Reinforcement: #4 Rebar Air Entrainment: 5% Concrete Volume each = Weight each = Total Load Weight =	Reference #: Date: Company: Description: Woodard's Concrete Products, Inc. 629 Lybolt Road, Bullville, NY 10915 (845) 361-3471 / Fax 361-1050