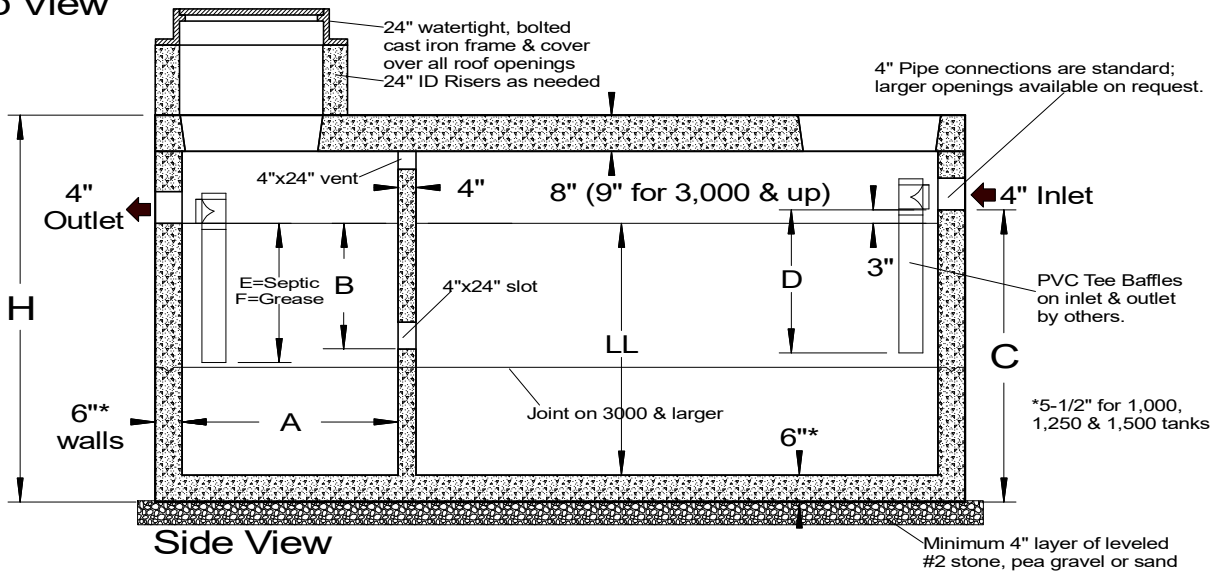


Gallons	L	W	H	LL	A	B	C	D	E	F
750	9'-6"	4'-6"	5'-11"	42"	34"	23"	51"	24"	21"	30"
1,000	10'-9"	5'-11"	4'-8"	35"	38"	16"	43"	21"	18"	23"
1,250	10'-9"	5'-11"	5'-2"	41"	38"	19"	49"	24"	21"	29"
1,500	10'-9"	5'-11"	5'-10"	49"	38"	22"	57"	27"	24"	37"
2,000	12'-6"	6'	7'-2"	58"	46"	31"	67"	32"	29"	46"
2,500	14'	6'-6"	7'-2"	58"	46"	31"	67"	32"	29"	46"
3,000	15'-6"	7'	7'-3"	58"	52"	31"	67"	32"	29"	46"
3,500	15'-6"	8'	7'-3"	58"	52"	31"	67"	32"	29"	46"
4,000	17'-2"	8'	7'-3"	58"	58"	31"	67"	32"	29"	46"
5,000	18'-8"	9'	7'-3"	58"	70"	31"	67"	32"	29"	46"
6,000	20'-0"	9'-6"	7'-3"	60"	70"	33"	69"	32"	30"	48"

Notes:

1. Effluent outlet filters are available as well as high level alarms.
2. Gas deflectors are available for 4" outlet pipes.
3. Tank designs based on the 2014 NYSDEC design standards.
4. Grease Traps are Type 2 with longer outlet baffles than Septic Tanks.
5. 1,000, 1,250, and 1,500 tanks are two-piece design with center seam.

Top View



Side View

SPECIFICATIONS		PRECAST TRAFFIC DUTY TANKS 750 TO 6,000 GALLONS SEPTIC TANKS & GREASE TRAPS
Concrete Min. Strength: 4,000 psi at 28 days Reinforcement: #4 & #5 Rebar / ASTM A615 Air Entrainment: 6% Construction Joint: Butyl Rubber Sealant Pipe Connection: Polylok Seal or as needed Load Rating: HS20-44 + 30% / ASTM C857		Woodard's Concrete Products, Inc. 629 Lybolt Road, Bullville, NY 10915 (845) 361-3471 / Fax 361-1050
		Page 4A 7/28/20